

# PlantVue

PcVue Solutions®  
CERTIFIED

# PlantVue

The HMI for Machine and Factory Floor Supervision



[www.pcvuesolutions.com](http://www.pcvuesolutions.com)

Distribué par :

**HVS.**  
PRECONISATEUR DE SOLUTIONS DEPUIS 1988

Contact :  
[hvssystem@hvssystem.com](mailto:hvssystem@hvssystem.com)

Tél : 0326824929  
Fax : 0326851908

Siège social :  
2 rue René Laennec  
51500 Taissy  
France

[www.hvssystem.com](http://www.hvssystem.com)

FRANCE

CHINA

GERMANY

ITALY

MALAYSIA

SINGAPORE

SWITZERLAND

UK

USA

# PlantVue

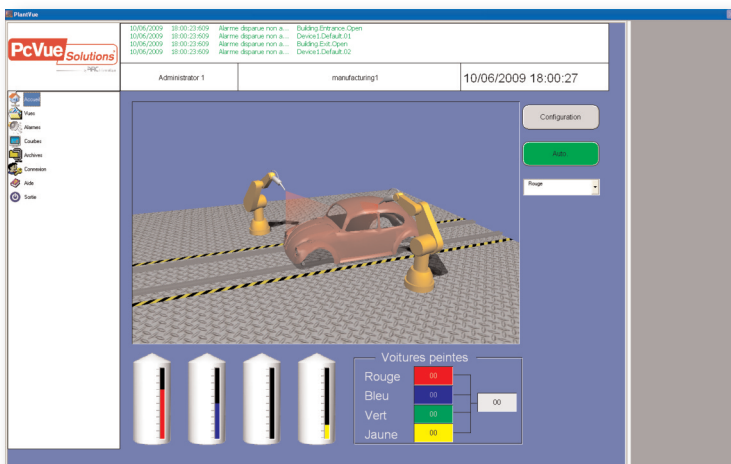
## Single station HMI for Windows Vista® & XP

**PlantVue** is a stand alone HMI (Human Machine Interface) application designed to provide a simple, yet powerful, HMI solution for Windows 2000™, XP™, Windows Vista® and Server 2003™. Real time data may be collected using both the included OPC server pack, with serial and Ethernet drivers for most major equipment manufacturers, and OPC servers from 3<sup>rd</sup> parties.

With features designed to meet the needs of the manufacturing industry, **PlantVue** is the perfect solution for OEM's, Machine Builders, independent supervision of small building and production lines co-ordinated using a MES (Manufacturing Execution Systems).

### Communication

**PlantVue** uses a Real Time Data Server (RTDS) kernel coupled with third-party and bundled OPC servers to communicate with industrial equipment.



The RTDS provides the ability to enrich any item from an OPC server adding properties such as range, engineering units or custom properties.

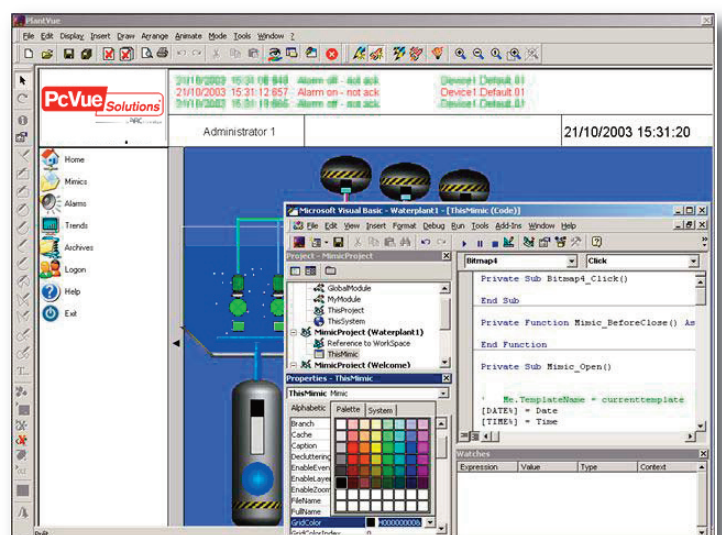
The simultaneous management of several different OPC servers allows you to create a single homogeneous HMI, using components supplied by a number of different manufacturers.

▶ **OBJECT TECHNOLOGY**

Re-usable graphic objects are easily created without the need for special tools. Any modification of an object is automatically propagated wherever it is used. User configurable libraries allow you to organise and distribute objects specific to your industry sector.

### ActiveX and Java™ Beans

**PlantVue** is an ActiveX & Java™ Beans container. Developers can integrate off-the-shelf 3<sup>rd</sup> party components by simply pasting them into a mimic. Using an enhanced VBA style property list, you can not only view and modify ActiveX and Java™ Bean properties but also link them directly to the real-time value of variables from the OPC server.



# ALL YOU NEED FOR HMI IN ONE PACKAGE

## 2D & 3D Graphic Engine

**PlantVue** has its own native window editor using the latest drawing technology for maximum productivity. The comprehensive animation range for monitor and control includes colour change, variable filling, exchange, movement, rotation, sizing and setpoint. Bitmaps including animated GIF files and AVIs may be imported and animated as well as 2D and 3D DirectX objects from CAD software. Several views of the same mimic may be opened and independently zoomed.

- MULTI PROTOCOL COMMUNICATION
- OBJECT TECHNOLOGY
- ACTIVEX AND JAVA™ BEANS
- 2D & 3D GRAPHIC ENGINE
- ZOOM AND DE-CLUTTER
- RECORDING AND EVENT LOGGING
- ALARM VIEWER
- TREND VIEWER
- LOG VIEWER
- MICROSOFT VBA SCRIPTING

## Zoom and De-clutter

De-clutter templates reveal and hide information as mimics are zoomed in and out. Mimics can be larger than the physical display and scrolled using vertical and horizontal scroll bars. CAD like layers may also be used to hide and reveal information to suit the current user or context.

## Recording and Event Logging

Real time data is recorded in standard database format using OLE DB and ADO. The recording format is user configurable making it open to existing and new applications. For each new project, **PlantVue**

automatically creates a default SQL Express database so that, for most applications, the developer does not require any specialized knowledge. Data may be recorded upon value change or periodically, on a local or remote database, and may use an existing database when it is necessary to share information with other manufacturing systems.

**PlantVue** includes a Database Manager for database administration including purging and export. The Database Manager may be installed locally or on a remote machine.

## Alarm Viewer

**PlantVue's** ActiveX Alarm Viewer provides comprehensive alarm management. The format in which alarms are displayed and the information provided is highly configurable.

Flexible alarm filtering uses a wide range of criteria such as area, level and type. Users can acknowledge and mask alarms using the integrated toolbar.

## Trend Viewer

Each ActiveX Trend Viewer manages up to eight pens with independent legends, scaling and line styles. Both real-time and historic data are supported. The Trend ActiveX comes with a comprehensive toolbar that may be used to modify the display at run-time (for time scale, range, zooming etc.) and print a hard copy of the Trend on a colour printer.

## Log Viewer

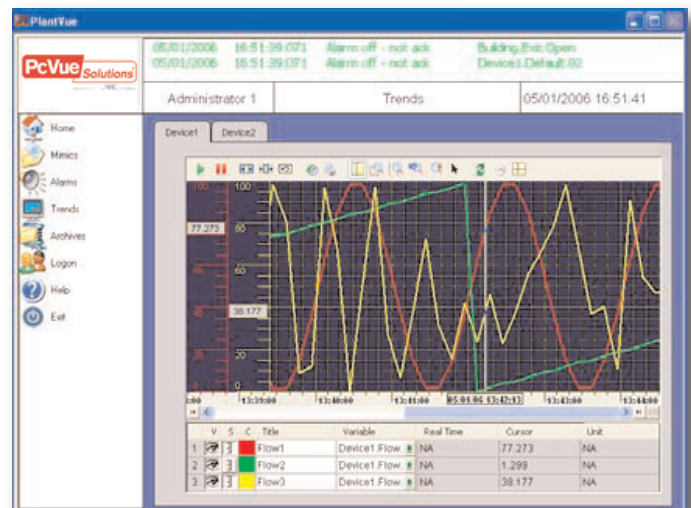
The **PlantVue** ActiveX Log Viewer displays historical data in user configurable lists. Flexible filtering and search facilities are available to easily find a specific occurrence of an event.

## Microsoft VBA Scripting

VBA scripting is an integral part of **PlantVue**, enabling you to adapt the application to any special needs of the user. Seamless access is provided to the properties, methods and events of all ActiveX components plus the project environment, OPC variables and native **PlantVue** drawing elements.

## Languages

**PlantVue** is available in many languages including Chinese, English, French, German, Italian, Russian & Spanish. Application languages for the localisation of your application are completely configurable and language changes may be made dynamically at run time under operator control.



Distribué par :



2 rue René Laennec 51500 Taissy France  
Fax: 03 26 85 19 08, Tel : 03 26 82 49 29

Email : hvssystem@hvssystem.com  
Site web : www.hvssystem.com



## ABOUT US

Founded in 1981, **ARC Informatique** is a privately held company with its headquarters in Sevres, Paris area, France. The company develops and markets industrial software. Originally designed for the process and manufacturing industries, the software now also caters for infrastructures (tunnels and motorways), water (treatment stations, potable water distribution), transport (tramways, trains and airports), building management systems (BMS) and power generation & distribution. In 2008, **Arc Informatique** launched the **PcVue Solutions** offer of software, hardware and application support as a global service to the market.



ISO 9001:2000 certified since July 2003, the company has an international presence via direct sales offices in the USA, Europe

and Asia plus a network of distributors as a sales channel. **Arc Informatique** has OEM agreements with Jumo, Veolia Water Division, Quantum Automation, Schneider Electric and Yokogawa that allow these companies to ship versions of the **PcVue Solutions** offer under their own brands. To date, over **38,000** licenses have been installed worldwide.

► **PcVue Solutions** is a suite of software and hardware for visualisation, control, management and data analysis for industrial, building, infrastructure and utilities applications.

**PcVue - HMI/SCADA software**

**WebVue - Web access solution**

**PlantVue - Stand alone HMI solution**

**FrontVue - Graphical user interface**

**Dream Report - Reporting tool**

**IntraVue - Industrial Ethernet diagnosis software**

**Alert - Industrial on call management system**

**Ethernet Direct - Industrial Ethernet switches**

## OFFICES

### FRANCE ARC Informatique - Headquarters and Paris office

2 avenue de la Cristallerie - 92310 Sèvres - France  
tel + 33 1 41 14 36 00 - fax + 33 1 46 23 86 02 - hotline: Tel +33 1 41 14 36 25  
email: arcnews@arcinfo.com - web: www.pcvuesolutions.com

**FRANCE - Aix Office**  
tel + 33 4 42 52 36 83  
fax + 33 4 42 29 74 55  
email: arcaix@arcinfo.com

**FRANCE - Grenoble Office**  
tel + 33 4 76 18 29 12  
fax + 33 4 76 41 06 71  
email: arcgrenoble@arcinfo.com

**FRANCE - Lyon Office**  
tel + 33 4 78 35 93 93  
fax + 33 4 78 35 35 92  
email: arclyon@arcinfo.com  
hotline: + 33 4 78 35 93 54

**FRANCE - Strasbourg Office**  
tel + 33 3 88 21 02 10  
fax + 33 3 88 21 02 11  
email: arcstrasbourg@arcinfo.com

**CHINA PcVue China**  
Representative Office  
369 Jianguo Road,  
ZhaoFeng Building 17A,  
200050 Shanghai  
tel + 86 21 5240 0280  
fax + 86 21 5240 0082  
email: china@pcvue.com.cn

**GERMANY PcVue GmbH**  
Mohnweg 2 A  
84079 Bruckberg  
Deutschland  
tel + 49 8765 938 435  
fax + 49 8765 938 437  
email: info@pcvue.de  
web: www.pcvue.de

**ITALY PcVue Srl**  
Linate Business Park  
Via Rivoltana, 35  
20096 Pioltello - Mi  
Italy  
tel /fax +39 02 9267248  
email: info@pcvue.it  
web: www.pcvue.it

**MALAYSIA PcVue Sdn Bhd**  
Unit 311, block B, Phileo  
Damansara 1  
No. 9 Jln 16/11  
46350 Petaling Jaya – Selangor  
Malaysia  
tel + 60 3 7957 5187  
fax + 60 3 7958 8760  
email: c.vilenstein@arcinfo.com

**SINGAPORE PcVue Sea**  
371 Beach Road  
#02-12 Keypoint  
Singapore 199597  
tel + 65 6396 9186  
fax + 65 6296 0943  
email: pcvuesea@pacific.net.sg  
web: www.pcvue-sea.com  
hotline: + 60 3 7957 5187

**SWITZERLAND PcVue GmbH**  
Harzachstrasse 2b  
8404 Winterthur  
Switzerland  
tel + 41 52 682 19 38  
fax + 41 52 682 19 58  
email: info@pcvue.ch  
web: www.pcvue.ch

**UK Control Technology International**  
Regal Chambers  
49/51 Bancroft, Hitchin  
Hertfordshire, SG5 1LL England  
tel + 44 1 462 45 77 00  
fax + 44 1 462 45 33 77  
email: info@ctiweb.co.uk  
web: www.ctiweb.co.uk

**USA PcVue Inc**  
10 Tower Office Park,  
Suite # 204  
Woburn, MA 01801 - USA  
tel + 1 781 569 0646  
fax + 1 781 569 6105  
email: pcvueinc@arcinfo.com  
web: www.pcvueinc.com

**ALSO DISTRIBUTORS/RESELLERS:** Argentina, Australia, Benelux, Brazil, Canada, Chile, China, Finland, Greece, India, Indonesia, Italy, Kuwait, Latvia, Lithuania, Malaysia, Morocco, Pakistan, Poland, Portugal, Russia, South Africa, Spain, Syria, Taiwan, Thailand, Tunisia, Turkey, UAE, Ukraine, Venezuela etc.