

SECURE AND PERMANENT IP CONNECTION OVER THE 3G NETWORK

The IPL-G12 router connects IP or RS232-RS485 devices to the GSM network with a high level of security.

The connection can be set either through the UMTS-3G service or the GPRS-EDGE service or through the 9600 b/s GSM-data service.

• Over the 3G or GPRS-EDGE service, the IPL-G12 router can set a secure IPSEC or TLS or PPTP tunnel with another end-point across the GSM and the Internet or a private IP network.

The connection is permanent, secure and transparent :

Due to the use of a VPN, end-points authenticate and data is encrypted. Moreover, any device of each end-point can connect to any device of the other end-point.

• if the GSM-data service is used, the IPL-G12 can set a dial-up connection with another end-point connected to the GSM or the PSTN or the ISDN network.



Distribué par :

HVS
PRECONISATEUR DE SOLUTIONS DEPUIS 1986

Contact :
hvssystem@hvssystem.com

Tél : 0326824929
Fax : 0326851908

Siège social :
2 rue René Laennec
51500 Taissy
France

www.hvssystem.com

etic
TELECOMMUNICATIONS

www.etictelecom.com

Key features

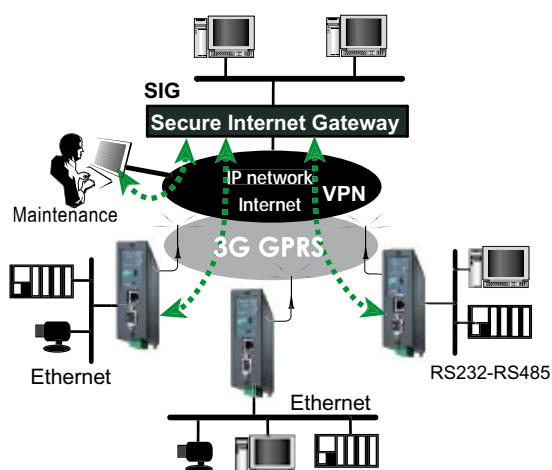
- 3G-HSDPA tri-band up to 384 kb/s
- GPRS-EDGE quadri-band
- GSM-data
- IPsec or TLS or PPTP VPN
- RAS function
- Serial gateway built-in
- Html configuration

Applications

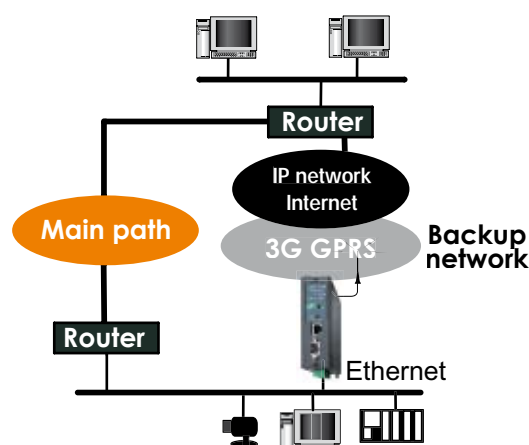
- Remote control and telemetry : Environmental applications, urban installations, transport networks, etc
- Mobile systems

IPL-G12

3G-GPRS-EDGE industrial router



Permanent and secure connection



Main connection backup

General characteristics

Dimensions (HxWxD)	130 x 38 x 110 mm 5.11x1.49x4.33 in.
Installation	DIN rail 35 mm
Protection class	IP20
Power	<ul style="list-style-type: none"> 9 to 30 VDC / 200 mA Reverse polarity protection
EMC immunity	<ul style="list-style-type: none"> ESD : EN61000-4-2 : 6 KV contact discharge RF field : EN61000-4-3 : 10V/m < 2 GHz Fast transient : EN61000-4-4 Surge V. : EN61000-4-5 : 4KV line / earth
Safety	EN 60950 & UL1950
RoHS	2002/95/CE european union directive
Humidity	5 to 95 % RH non condensing
Operating T°	-20°C/+60°C 95%

UMTS-GPRS-EDGE-GSM data

Antenna	FME connector
3G - UMTS-HSDPA	<ul style="list-style-type: none"> Freq : 850 - 1900 - 2100 MHz Data rate : 384 Kb/s downlink & uplink
EDGE-GPRS	<ul style="list-style-type: none"> Freq : 850 - 900 - 1800 - 1900 MHz Data rate:85Kb/s downlink 21Kb/s uplink EDGE Multislot class 10 GPRS Multislot class 12
GSM data	<ul style="list-style-type: none"> 9600 b/s dial-up - PPP link

IP Router/ IP@ / Management / Ethernet

IP router	<ul style="list-style-type: none"> Static routes RIP V2 or OSPF
IP@ translation	<ul style="list-style-type: none"> Masquerading (NAT) Portforwarding (DNAT) Advanced IP@ translation
IP @	<ul style="list-style-type: none"> WAN : DHCP client or fixed IP @ LAN : DHCP client ou server or fixed IP@
DNS	<ul style="list-style-type: none"> WAN : DYN DNS LAN : DNS relay & DNS server
Management	SNMP V2 standard MIB
Configuration	Html server & DIP switches

Remote access server (RAS)

Users	<ul style="list-style-type: none"> 25 users list with Login + Password
VPN	<ul style="list-style-type: none"> PPTP - L2TP/IPSEC - TLS (OPEN VPN)
M2Me	<ul style="list-style-type: none"> M2Me_Secure VPN software compatible

Security functions

VPN	<ul style="list-style-type: none"> TLS-SSL, IPSEC, PPTP Preshared key / X509 Certificates Encryption : 3DES & AES 128-192-256 Authentication : MD5 & SHA-1 16 VPN tunnels - 50 rules
Log	<ul style="list-style-type: none"> Date and time stamp Events : Connection, restart, alarm
Alarm input	1 input : Email - SNMP message
Alarm output	<ul style="list-style-type: none"> 1 output Relay 1 A @ 24VDC max. Power - port break - ADSL failure

RS232-RS485 gateway

RS232-RS485	<ul style="list-style-type: none"> Raw TCP client & server, Telnet Modbus master & slave 1 serial port RS232-RS485 2 wires 1200 to 115 200 b/s 8 bits parity N/O/E
--------------------	--

Ordering info.

	IPL-G12B	IPL-G12B-3G
3G - UMTS - HSDPA		•
850 / 1900 / 2100 MHz		
GPRS-EDGE	•	•
850 / 900 / 1800 / 1900 MHz		
GSM data 9600 b/s	•	
16 IPSEC or TLS VPN tunnels	•	•
1 ethernet 10 BT & 1 RS232-RS485	•	•
IP router + firewall	•	•
Serial gateway	•	•
RAS server	•	•
Alarm digital Inputs / Output	3 / 10	3 / 10



ETIC TELECOM
13, Chemin du Vieux Chêne
38240 Meylan France
Tel : 33 4 76 04 20 00

www.etictelecom.com

