



Installation Instructions WL-19(D) Enclosure Mounting Kit Kit Number 416-0478

Kit Parts List

Part No.	Quantity	Description
110-0042	4	Screw 8-32 x ½" Philips
135-9013	2	U-Bolt 2" I.D. ¼-20
140-0020	4	Nut, Hex KEPS 8-32
140-0023	4	Nut, Hex KEPS ¼-20
205-0196	2	Bracket Wireless Enclosure Mounting

Instructions

1. Mount the two aluminum brackets to the back of the WL-19(D) enclosure using the four 8-32 x ½ screws and four 8-32 nuts. The brackets can be attached in two different configurations to facilitate mounting to either a vertical mast or horizontal rail, see **Figure 1** and **Figure 2**. The notches in the brackets should face the mast or rail.

IMPORTANT: For OMNI (all) directional communication the antenna of the WL-19 must have vertical orientation as shown in **Figure 1**. Mount the brackets to the enclosure accordingly.

2. Using the two U-Bolts and four ¼-20 nuts, attach the brackets to the mast or rail as shown in **Figure 1** and **Figure 2**.

IMPORTANT: For reliable communication, the antennas at each end of the wireless link must be visible (line-of-sight) to each other and clear of any obstructions including trees.

927-0266

Garner Industries, 7201 N. 98th St., Lincoln, Nebraska 68507, Phone 800-278-4241 or 402-434-9102

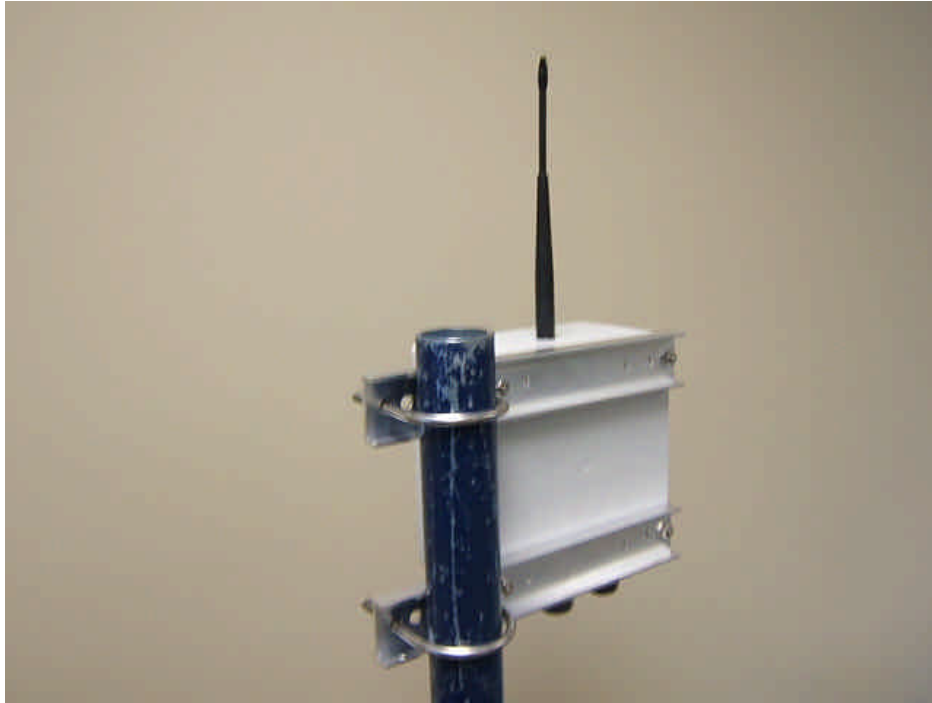


Figure 1



Figure 2

Garner Industries, 7201 N. 98th St., Lincoln, Nebraska 68507, Phone 800-278-4241 or 402-434-9102